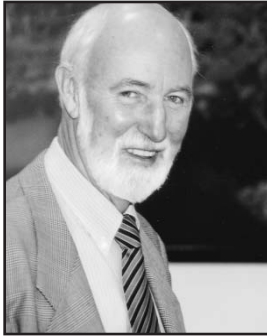




ANNUAL REPORT 2007

A Message from the Chairman
The 2006-2007 Year in Review
The Board
Directors of TasBuild Limited

A Message from the Chairman



The 2006/2007 year was strong and cemented the Trustees sound financial position.

During the year the Trustee purchased a property in the inner city of Hobart. The administration will be moving into a portion of the property early November 2007. The remainder of the property is currently under a leaseback arrangement from the seller. Once the seller has vacated the Trustee will be developing the property. This investment is inline with the Trustee's investment policy by investing in Tasmanian Construction projects and creating employment for its members.

Due to prudent management of the fund the Trustee was able to increase the benefits from the scheme in 2006. The Board were extremely proud to be able to return these benefits to the construction industry. This has resulted in a record number of entitlements being paid from the scheme during the financial year. We hope this will continue on in the coming years.

The new financial year will undoubtedly be an interesting one with the volatility in the investment market. However the Trustee is well placed to ride through any downturn that may arise in the markets during the year and industry can be confident that TasBuild's objectives are long term and in the best interests of the industry.

I would like to express my appreciation to fellow Board members for their support and assistance during the year and finally without the dedication and contributions from the Chief Executive Officer and staff the Trustee would not be in the strong position it is in today.

A handwritten signature in black ink that reads "Hodgman". The signature is written in a cursive, flowing style.

Des Hodgman
Chairman

The 2006-2007 Year in Review
by the Chief Executive Officer



I concur with the Chairman confirming that the 2006-2007 resulted in positive results for the Trustee.

Our investment performance was again strong closing the financial year with an overall investment return of 15.76% slightly up from last year's result of 14.82%. MLC Implemented Consulting continues to provide the Trustee with investment services. Their performance continues to be monitored against the Trustee's investment objectives with a comprehensive review undertaken on an annual basis.

The Trustee's Actuary is due to complete a full review of the Fund by October 2007 which will provide the Trustee with advice and certainty of funding levels. It is the Trustee's goal to maintain the lowest possible subsidised rate, currently 0.3%, to employers in the industry for as long a period as possible. Current indications are we will be able to achieve this for some years to come.

The Trustee's self employed scheme continues to grow with membership increasing by 32.3% during the financial year. The Trustee is pleased to be able to continue to provide excellent interest rates to the scheme announcing in June the rate for 2007-2008 year has been set at 12.15%.

Worker and employer numbers continued to increase at the same rate as in previous years. A higher than normal number of claims were paid during the year totalling in excess of \$1.4 million.

The upcoming financial year is going to be an exciting one for the Trustee. With the move to new premises early in November as well as the commencement of a large construction project, 2007-2008 will be an interesting and challenging year.

A handwritten signature in black ink, appearing to read 'Maree Tomes'.

Maree Tomes
Chief Executive Officer

The Board

The Construction Industry Long Service Board is established under the provisions of the Trust Deed. The Board consists of seven members. Three members are appointed to represent employers. They are nominated by the Master Builders Association of Tasmania, the Tasmanian Chamber of Commerce and Industry and the Building Industry Specialist Contractors Association. To represent employees, three members are selected from nominations by the Construction, Forestry, Mining and Energy Union, the Australian Manufacturing Workers Union and Unions Tasmania. An independent Chairman is nominated by the Board of Directors.

The membership of the Board at the end of the financial year was:

Mr Des Hodgman	Chairman
Mr Chris Atkins	Master Builders Association of Tasmania
Mr Adrian Granger	Civil Contractors Federation (<i>nominated by TCCI</i>)
Mr Michael Shepperd	Building Industry Specialist Contractors Association
Mr Tony Benson	Construction, Forestry, Energy & Mining Union
Ms Anne Urquhart	Australian Manufacturing Workers Union
Mr Kevin Harkins	CEPU - Electrical Trades Union (<i>nominated by Unions Tasmania</i>)

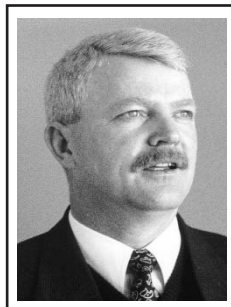
The Board of Directors meet on a monthly basis, in 2006-2007 the Board met on 7 occasions, refer attendance by individual Directors below. Other meetings may be held to consider specific matters that require attention between scheduled meetings.

Number of Meetings Attended 2006-2007 Financial Year

Des Hodgman	7	
Chris Atkins	4	
Michael Kershbaum	3	<i>Alternate Director for Chris Atkins</i>
Mark Watson	1	
Neale Buchanan	2	
Adrian Granger	1	
Michael Shepperd	7	
Tony Benson	4	
Bill White	3	<i>Alternate Director for Tony Benson</i>
Anne Urquhart	6	
Darren Clark	1	<i>Alternate Director for Anne Urquhart</i>
Kevin Harkins	6	

Directors of TasBuild Limited

MR CHRIS ATKINS Representative of Master Builders Association



Chris Atkins is the Executive Director of the Master Builders' Association of Tasmania Inc., a position he has held since 2000. Starting in the workforce in 1974 Chris completed trade training as an electrical mechanic shortly thereafter sought a change in career and was employed by the Australian Customs Service stationed in Melbourne. In 1989 he was recruited by the Master Builders' Association.

Chris has achieved a Graduate Diploma in Construction Law (Melbourne University) and an Associate Diploma in Business (Accounting). He is a member of the National Institute of Accountants as a 'Fellow Professional National Accountant' (FPNA) and is a member of the Australian Institute of Company Directors. Chris also represents the Master Builders' Association and the industry on numerous other Boards, including the Government's Procurement Advisory Group, Building Apprenticeship Scheme and the Tasmanian Building and Construction Industry Training Board.

MRS ANNE URQUHART
Representative of the Australian Manufacturing Workers Union

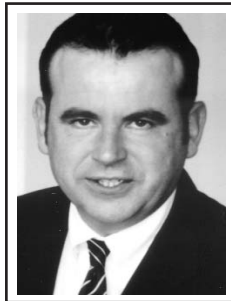


Tasmanian State Secretary of the Australian Manufacturing Workers Union, Anne commenced work with Food Preservers Union in 1990 as a union organiser, became State President of the AMWU in 1998 and State Secretary in 2004.

Anne was a Trustee Director for Food Industry Superannuation Trust, until the amalgamation of FIST with STA in 2005, now member of sub board of STA Food and Confectionary Super.

Anne is Vice President Unions Tasmania and a Member of the Tasmanian Food Industry Training Council and Tasmanian Manufacturing Industry Council.

MR MICHAEL SHEPPERD
Representative of the Building Industry Specialist Contractors Association



After graduating with a Bachelor of Business Degree (Accounting), Michael gained his work experience within Tasmanian industry.

As a certified Practising Accountant, Michael's involvement in public practice has concentrated on the provision of services to specialist contractors in the building and construction industry.

Michael is also a member of the Building and Construction Industry Council, the AMCA Tasmania Industry Fund, the Tasmanian Building and Construction Industry Training Board - Services and TASTEC Group Training.

MR ADRIAN GRANGER
Representative of the Civil Contractors Federation

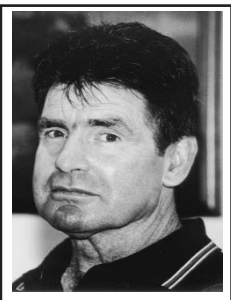


Adrian Granger is the Chief Executive Officer of the Civil Contractors Federation Tasmanian Branch, a position Adrian has held since 2003.

Adrian's career started in the late 70's with the Government as a Cadet Draftsman. On completion of Adrian's Diploma in Civil Engineering he moved to a private consulting engineering firm based in Hobart and now runs his own Civil Engineering Consulting agency and a Civil Contracting business.

Adrian is also a member of the Building and Construction Industry Council, the Tasmanian Building and Construction Industry Training Board, Road Construction Industry Forum, Australian Institute of Company Directors and Dial Before You Dig Vic/Tas.

MR TONY BENSON
Representative of the Construction, Forestry, Energy & Mining Union



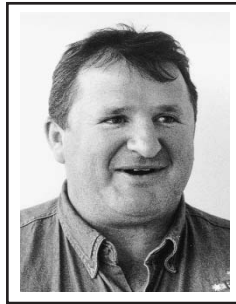
Tony Benson is the Secretary of the Construction, Forestry, Mining and Energy Union (Construction & General Division), Tasmanian Divisional Branch. After leaving school Tony completed an apprenticeship in Painting and Decorating with the Department of Housing and Construction (Housing Department). Some 21 years later Tony worked in the private sector as a painting foreman.

In 1991 Tony started work with the Operative Painters and Decorators Union and was elected Secretary in March 1992. After amalgamation with the building unions in 1993 and other restructuring, Tony was appointed Secretary of the combined building union, the CFMEU, in 1998 and was elected Secretary in 2000.

Tony is a Director of the Building Group Apprenticeship Scheme (BGAS), a Director of the Tasmanian Building Construction Industry Training Board (TBCITB), a Director on the Board of the Australian Construction Industry Redundancy Trust - ACIRT as well as the Union's representative on several Government Boards.

Directors of TasBuild Limited *Cont.*

MR KEVIN HARKINS
Representative of the CEPU - Electrical Trades Union



Kevin Harkins is the Assistant Secretary, Southern States Branch, of the Electrical Trades Union (ETU). Kevin is an "A" grade Electrician with over 15 years experience in all fields of electrical work. Kevin has had many years of experience working with apprentices as a Field Officer and Director of a large Group Training Company.

Kevin became an Organiser with the ETU in 1995 in Victoria and transferred to Tasmania in January 2001 to rebuild the Union in Tasmania.